

surfaces' superhero



clayton

STONE

WOOD

BRICK

LEATHER

METAL

WEAVA

Clayton is inspired by nature; its symbol is the gecko. Just like a gecko that can perfectly cling to rough surfaces, Clayton achieves excellent adhesion to a wide range of surfaces with its superior bonding strength.

The gecko stands out in nature with its self-renewing ability and extraordinary durability. Clayton reflects these same qualities in its long-lasting and sustainable product structure. Just like this inspiring creature, which exists in harmony with its environment, Clayton also prioritizes the future with its low carbon footprint and environmentally friendly approach.

With its flexible and modular structure that adapts easily to different surfaces, Clayton aims to build a more sustainable and innovative world-driven by nature. If you want to build the future today, Clayton is with you.

WHAT IS CLAYTON?



PERGE



AVRON



fire resistance

Offers A2-class fire safety.



durability

Long-lasting and resistant to outdoor conditions.



flexibility

Bendable and highly flexible material.



easy application

Thin, lightweight, and flexible-easy to transport, cut and apply.



eco friendly

Highly recyclable and environmentally responsible.



breathability

Improves indoor air quality.



anti-stain & anti-bacterial

Facilitates cleaning and maintains visual appeal.



waterproof

Suitable for humid environments and outdoor use.



thermal control

Absorbs solar energy to regulate temperature and save energy.



moisture control

Prevents mold and dampness, ensuring a healthy indoor environment.

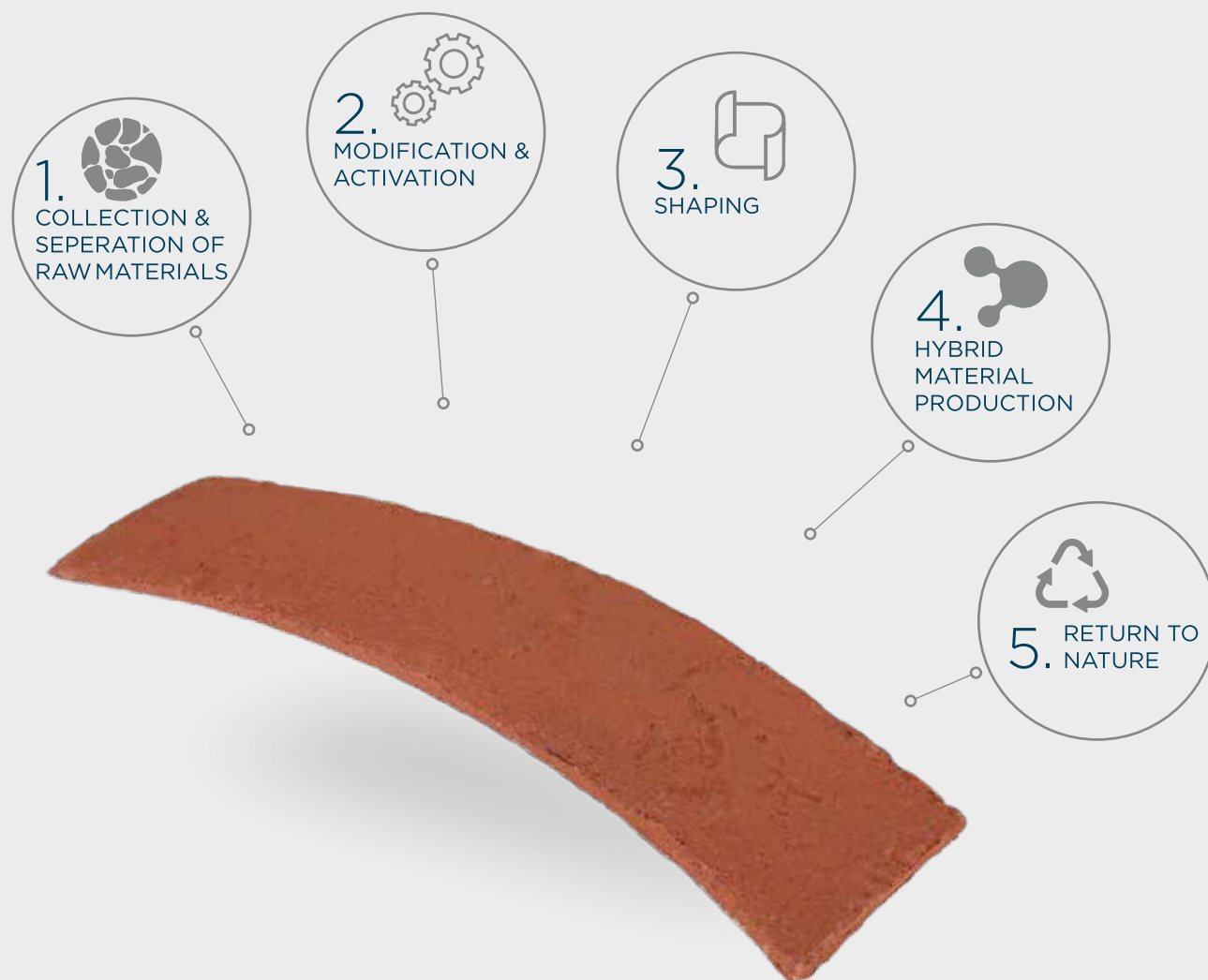
Clayton is produced using sustainable raw materials recovered from the construction and industrial sectors—such as stone powder, natural sand, and other eco-friendly components.

After undergoing drying, grinding, classification, and various modification processes, the materials are shaped using low-temperature 3D molding technology.

Thanks to an emission-free production process, Clayton is manufactured using an environmentally responsible method, and all materials used are recyclable.

Clayton is a new generation, energy-efficient, low-carbon, and sustainable building material.

It has wide market potential and offers strong social and ecological benefits.



ADVANTAGES - COMPARISON TABLE

Criteria	Exterior Ceramics	Natural Stone Paint	Dry-Mounted Stone	Dry-Mounted Aluminum Panel	Clayton
Durability	20 years	5–8 years	20 years	20 years	Over 30 years (passed aging tests)
Eco-Friendliness	Not eco-friendly	Not eco-friendly	Not eco-friendly	Not eco-friendly	Highly eco-friendly and recyclable
Fire Resistance	Class A	-	Weak (dry) / A (wet)	Fire-retardant	A2 class fire resistance
Freeze Resistance	50 cycles	Weak	Medium	Becomes brittle when expanding	High resistance up to 100 cycles
Safety	High fall risk	Easily chipped / cracked	Hidden fall risk	Risky	Secure and impact-resistant
Cleaning / Maintenance	Easy cleaning	Requires annual cleaning	Easy cleaning	Easy cleaning	Self-cleaning with rain, maintenance-free
Impact Resistance	Poor	Medium	Durable	Easily deformed	High anti-impact performance
Aesthetic Performance	Uniform look	Generic	Natural appearance	Industrial look	Multiple textures: stone, wood, leather, metal

A photograph of a waterfall cascading over large, layered, tan-colored rocks. The water is captured in motion, creating a soft, blurred effect. The surrounding environment is a lush forest with moss and fallen branches visible. The word "STONE" is overlaid in large, white, outlined letters across the middle of the image.

STONE

“a natural stone feel,
without moving a single stone”

ARITA



CL- 1001
1190x590x6,5
2640x1160x6,5

ARITA



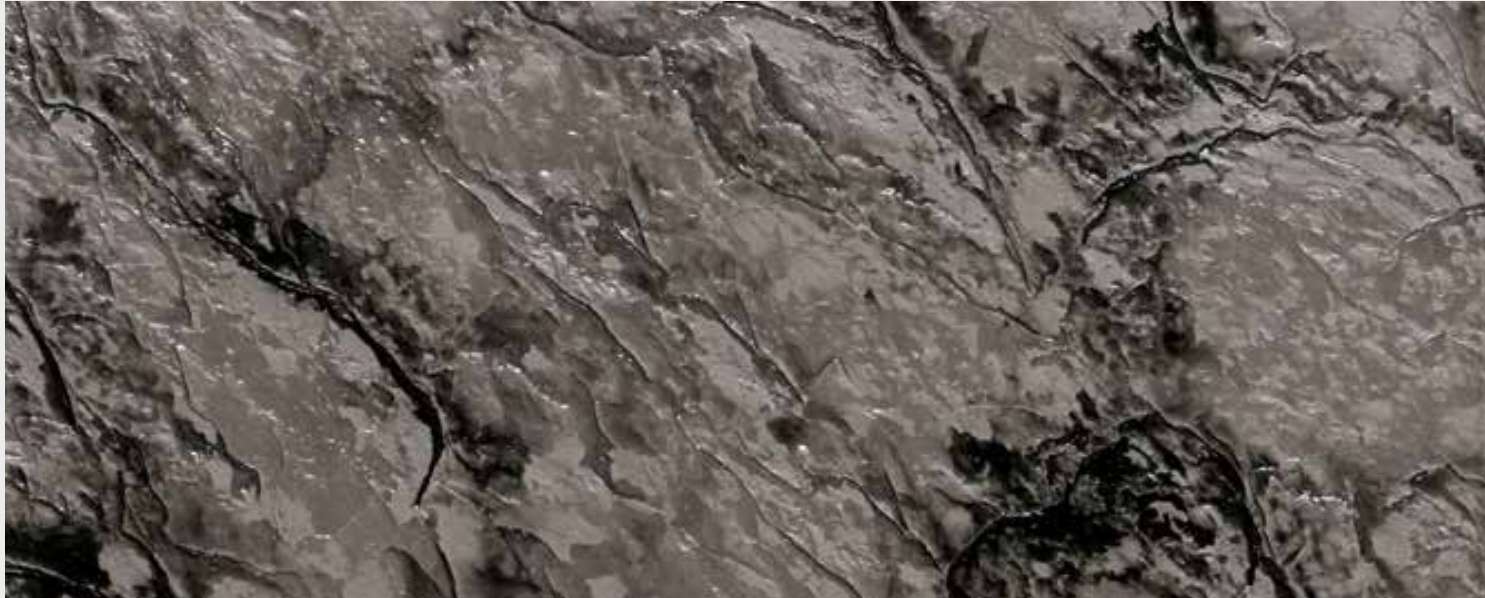
CL-1002
1200x590x6,5
2640x1160x6,5

ARITA



CL-1004
1190x590x6,5

TUNGA



CL-1504
1190x590x3
1200x600x3

TUNGA



CL-1502
1195x595x3
1200x600x3
3000x1200x3

TUNGA



CL-1503
1200x600x3
3000x1200x3

TUNGA



CL-1505
1200x600x3

TUNGA



CL-1506
1200x600x3

TUNGA



CL-1501
1200x600x3
3000x1200x3

NARVA



CL-8004
1200x600x6,5

NARVA



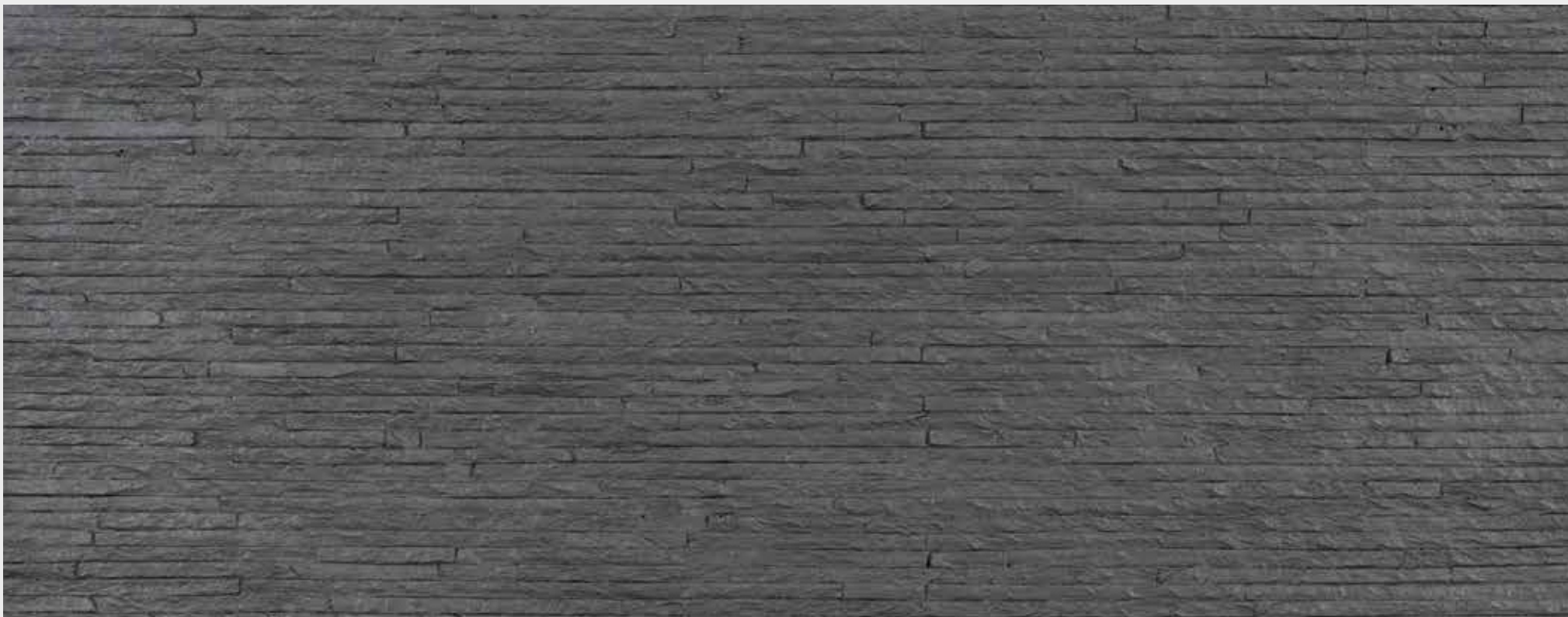
CL-8001
1190x595x6,5
1200x600x6,5
3000x1200x6,5

NARVA



CL-8002
1200x600x6,5
3000x1200x6,5

SERVA



CL-1101
1200x600x7

SERVA



CL-1102
1200x600x7

PETRA



CL-2002

1200x600x6
2390x1200x6

PETRA



CL-2001

1200x600x6
2400x1200x6
3000x1200x6

GRANIT



CL-9001
1200x600x5

GRANIT



CL-9002
1200x600x3,5

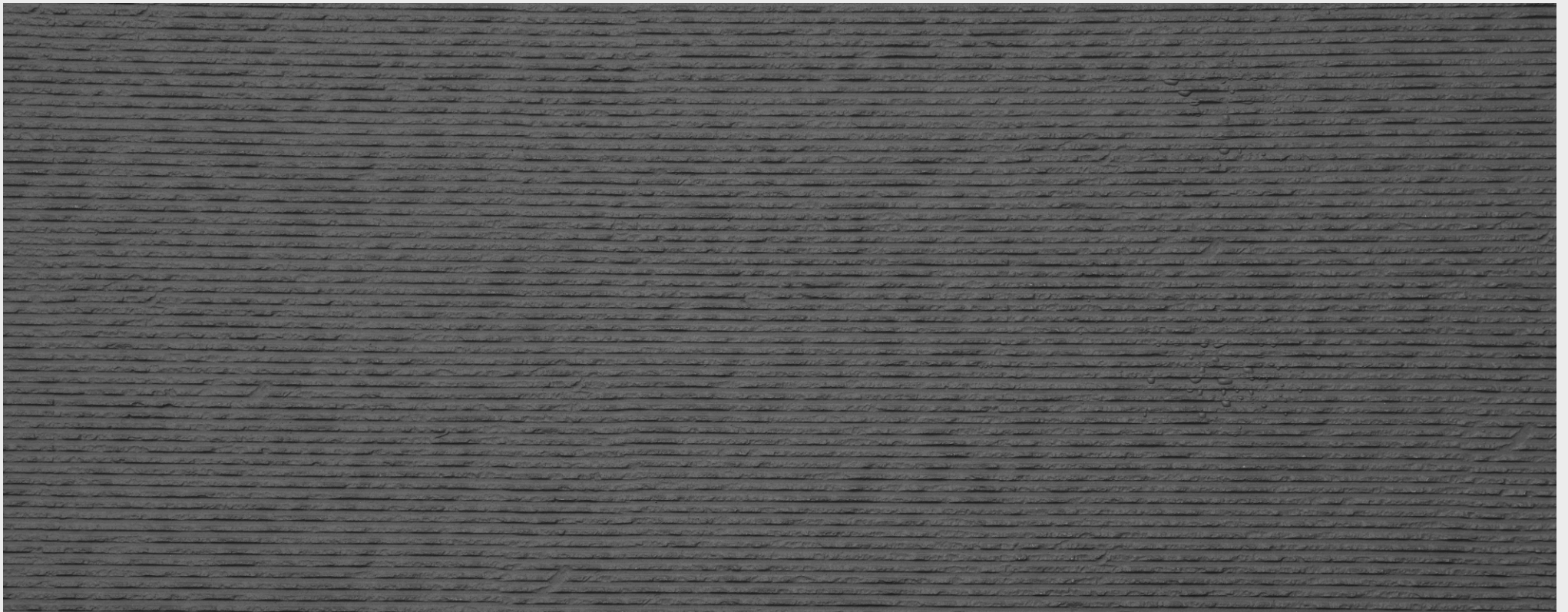
CARRA



CL-7003

1190x590x4

CARRA



CL-7005

1180x580x4

CARRA



CL-7001
1190x590x4
3000x1200x4

CARRA



CL-7002
1180x580x4
1190x590x4

CARRA



CL-7004
1180x580x4

AVRON



CL-1704
1200x560x4,5

AVRON



CL-1703
1200x560x4,5

AVRON



CL-1701
1200x560x4,5

TRAVERTEN



CL-1801

1200x600x2,8

TRAVERTEN



CL-1805

1200x600x2,8
3000x1200x2,8

TRAVERTEN



CL-1802

1200x600x2,8
3000x1200x2,8

TRAVERTEN



CL-1803

1200x600x2,8
3000x1200x2,8

TRAVERTEN



CL-1804

1200x600x2,8
3000x1200x2,8

TRAVERTEN



CL-1806
1200x600x2,8
3000x1200x3,2-3,8

TRAVERTEN



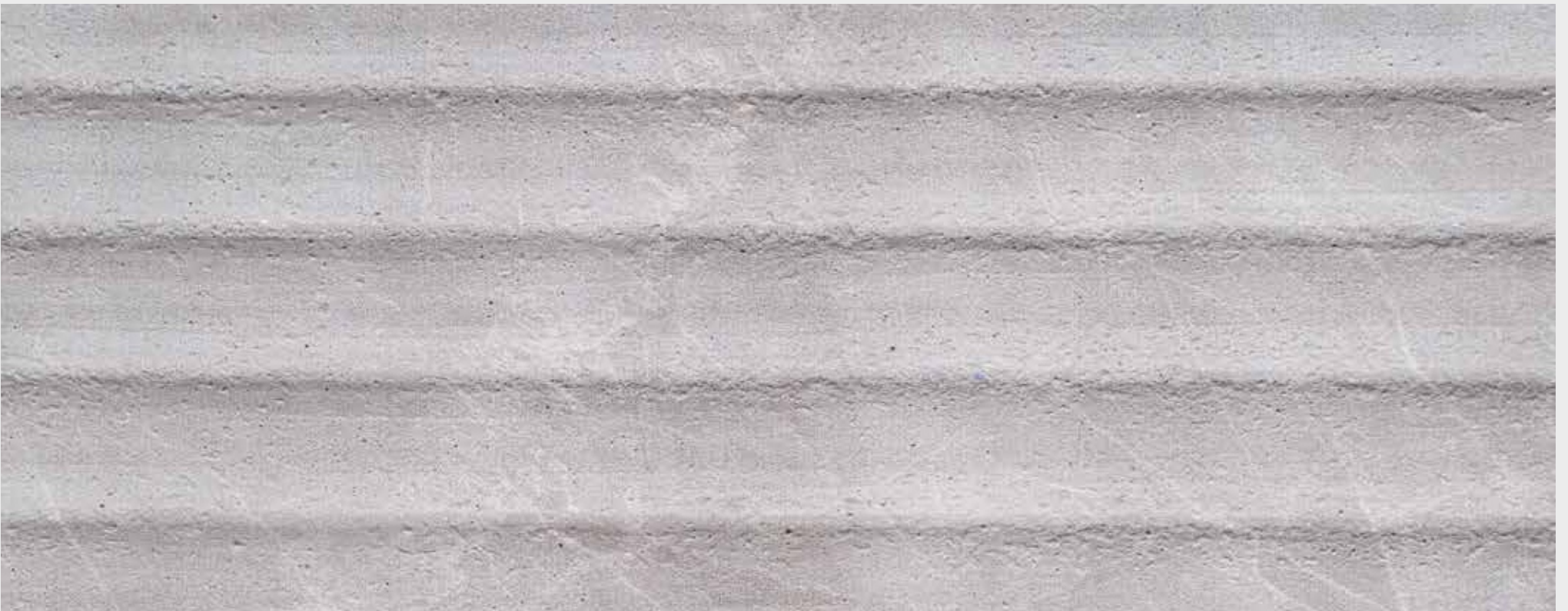
CL-1809
1200x600x2,8
3000x1200x3,2-3,8

VOLAN



CL-6001
2830x1200x7

VOLAN



CL-6002
2830x1200x7

GALATA



CL-4001

1200x600x4

CEMENT



CL-5001

1200x580x3.2

DUNE



CL-1202
2360x1200x2,8

LUNA



CL-1601
3000x1100x9

RENGA



CL-1301
3000x600x9

AREN



CL-1406
1200x600x3.5

PERGE



A photograph of a forest with tall, thin trees and a mossy forest floor. The word "WOOD" is written in white outline letters across the middle of the image.

WOOD

“we carry nature’s trace,
without cutting a single tree”

WOOD



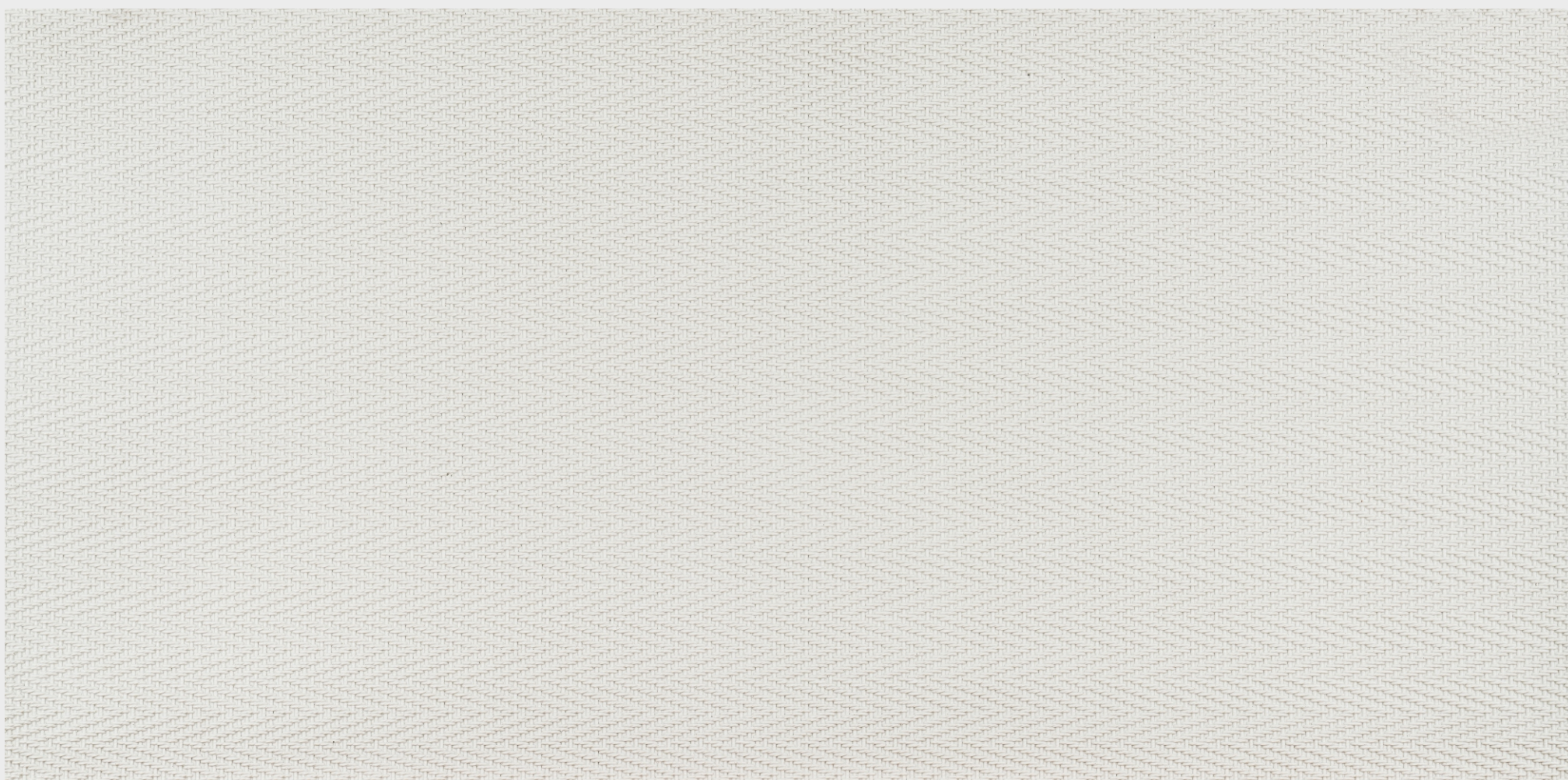
CL-1909
1170x570x3,5



WEAVA



VIVA



CL-2401

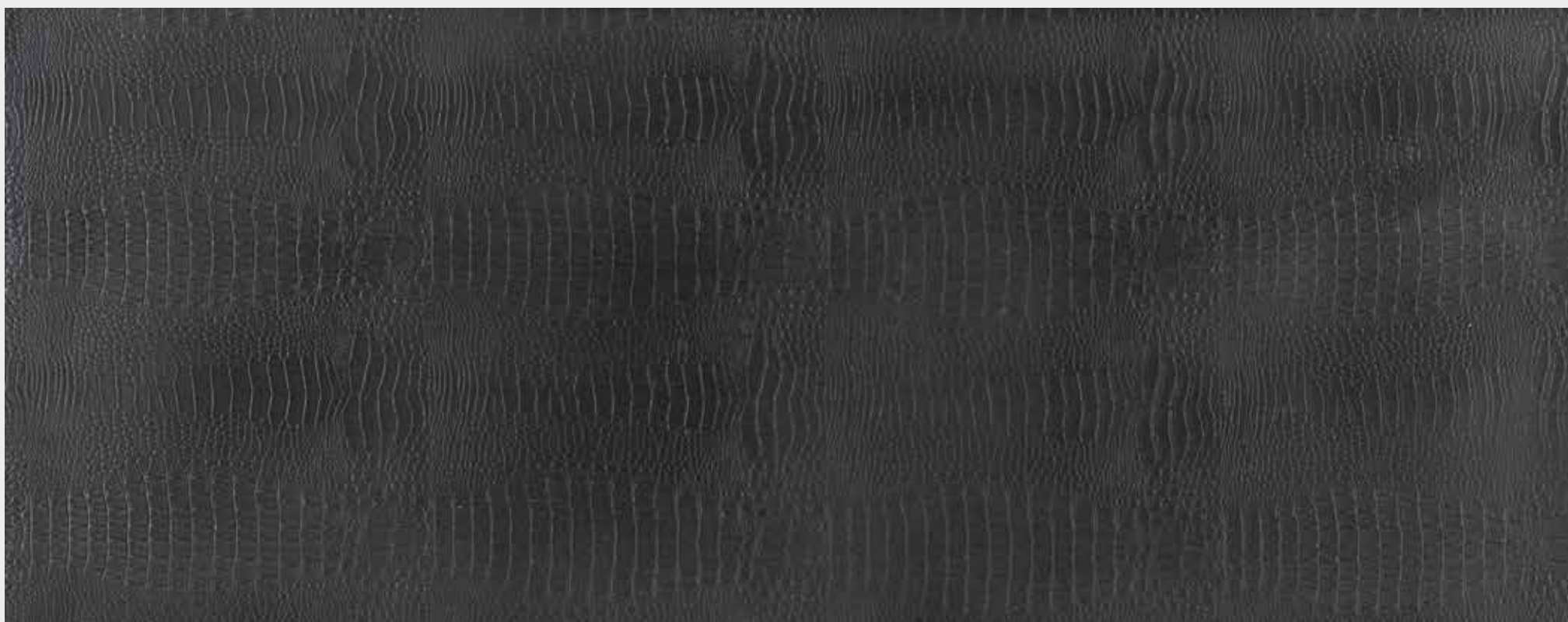
1180x590x3.5
1200x3000x3.5



LEATHER

“we preserved elegance,
and life too”

CROCODILE



CL-2201
1200x600x3,5

CROCODILE



CL-2202
1200x600x3,5

A photograph of a brick structure featuring a central archway made of red bricks, framed by a larger archway made of dark grey bricks. The structure is covered in vines with autumn-colored leaves (yellow, orange, and red). The ground is paved with dark grey bricks and scattered with fallen leaves. The word "BRICK" is overlaid in white, outlined text across the center of the image.

BRICK

CUBRIK



CL-2104
212x58x3,5

CUBRIK



CL-2103
212x58x3,5

CUBRIK



CL-2101
212x58x3,5

CUBRIK

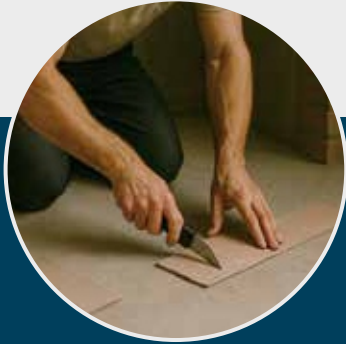


CL-2102
212x58x3,5

APPLICATION & MAINTENANCE



1. SURFACE PREPARATION



2. CUTTING & APPLICATION



3. ADHESION TO SURFACE



4. GROUTING



5. CORNER DETAILS



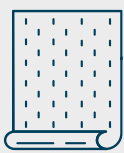
6. CLEANING



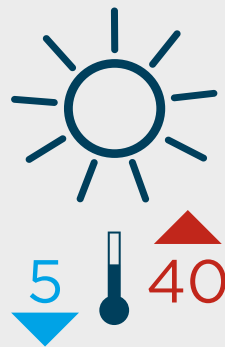
MAINTENANCE & REPAIR TIPS

1. Routine Cleaning: Use a soft cloth or sponge with clean water.
2. Avoid Chemicals: Do not use acid-based, bleach, or harsh chemical cleaners.
3. Avoid Abrasives: Do not use abrasive materials that may damage the surface.

SUITABLE SURFACES & CLIMATIC CONDITIONS

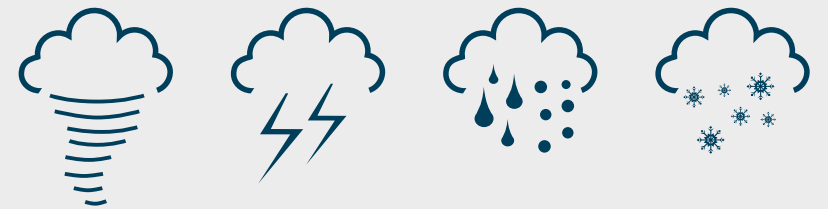


- Concrete
- Plywood
- Composite Panels (ACP)
- Plastered Walls
- Ceramic Tiles
- Cement Boards
- Glass
- Metal
- MDF & Chipboard Panels
- Natural Stone
- Marble
- Laminate



APPLICATION TEMPERATURE

During the application and for 24 hours afterward, the surface and ambient temperature must remain between 5°C and 40°C. In summer, avoid prolonged exposure to direct sunlight before installation.



WEATHER CONDITIONS

Application should be avoided during the following adverse weather conditions:

- Strong winds
- Thunderstorms and lightning
- Rain
- Snow

During application, effective protective measures must be taken against rainwater or water from washed walls.



Modular Structures & Prefabrication

- ☒ Container Homes, Offices, Tiny Houses - for both Interior & Exterior Cladding

Compatible with lightweight structures. Fast application and easy installation.

Impact - resistant, aesthetic surface options that fit modern designs.



Furniture & Interior Design

- ☒ Furniture Coverings
- ☒ Store & Exhibition Decorations
- ☒ Mall & Office Interior Design



Construction & Architecture

- Exterior Facades
- Interior Walls & Ceiling Coverings
- Flooring
- Thermal Insulation & Cladding
- Garden Walls & Patios
- Decorative Pools

Suitable for renovation; lightweight, fire - and impact - resistant, eco - friendly, and durable against harsh conditions.



Maritime & Transportation

- Ship & Yacht Interiors
- Metro & Tunnel Coverings
- Airports & Terminals

Flexible and modular panel system suitable for 3D applications.



Other Industries

- Caravans & Custom Vehicle Interiors
- Art & Sculpture Applications
- Advertising & Signage
- Acoustic Panels & Soundproofing.

AREAS OF USE



surfaces' superhero



Çiğiltepe Mahallesi,
Bostancık Caddesi,
No:15 Mamak/ANKARA
info@clayton.com.tr

www.**clayton**.com.tr